



LARGE NATIVITY SET



Lights not included



Comes Gift Boxed & with an Elim Souvenir Bag



16 Piece - Large Nativity Set – (pieces below)



Colors or materials may be minimally different than pictured. People-figures about 8 ins (20cm) high

Extra Pieces: - *With special features to make them fun*
 - Add these to the Large Nativity Set by *ordering* them.

A Second Shepherd



The second Shepherd has a greater gap between the 2 types of stuffing, making it able to be bent over at the waist, and the crook can be turned from horizontal to vertical.

A Baby Camel



The Baby Camel comes with a string-leash that can be attached to the Wise Men as they journey to the stable, or can be attached to the Mother-camel like a 'camel-train'

Little Donkeys (two)



'Junior Donkey' (left) has a hair-like coat, and tiny 'Baby Donkey' is yet smaller still; as they play near Mother

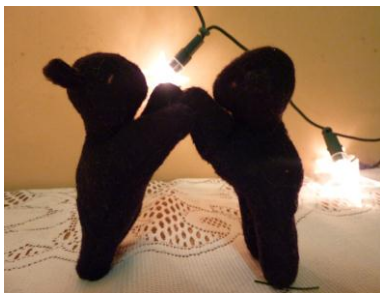
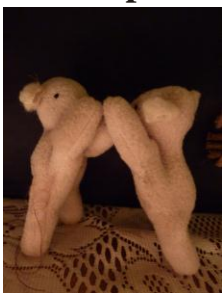
Baby Sheep...



Can be placed over the crib...

over other animals...

under the Mom in the field



lent arm-to-arm as though rejoicing... or be slid into the arm of the Shepherd.

Special features: (These features are automatically made within the Nativity Set)



Mary can hold her baby. Her arms are stitched together, but left loose, so that she can cradle her baby. Bend baby & push into arms horizontally, not vertically.

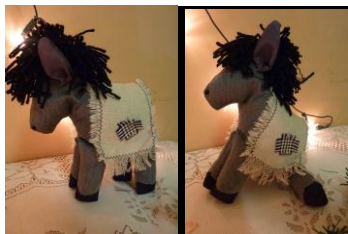


Sealed inside the Baby's filling has been placed the Bible verse John 3:16: "For God so loved the world that He gave His only begotten Son, that whoever believes in Him will have everlasting life"

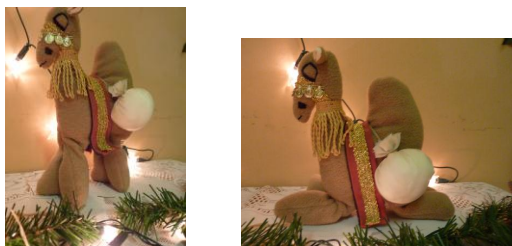
The lower heavy filling in each figure makes them fun to be put in various positions without falling.



The Kings can be firmly 'plonked' facing downwards in a bowing position before the crib.



The Mother Donkey can sit or stand - plonk her *onto her rear* and place the back legs apart.



The Mother Camel can stand or kneel. Bend the front legs *forwards*, and the back legs *backward*. Pull **up** by the **hump** and firmly PLONK to make it stand again.



The Angel's arms and wings have safe wire in them to create beautiful positions – i.e. to praise. You may also use the Halo for hanging the Angel above the stable.



The 'Twin Sheep' appear to 'kiss' if placed nose-to-nose, or shoulder-to-shoulder they look over the crib.



The Stable has 2 different colors and settings, one on either side. (These can be used to represent 'a stable' and 'a home', if teaching the Biblical Story of the Wise men, who followed the star, possibly having arrived later.)

We have tried to sew facial expressions to represent the fruits of God's Spirit. Can you see them??



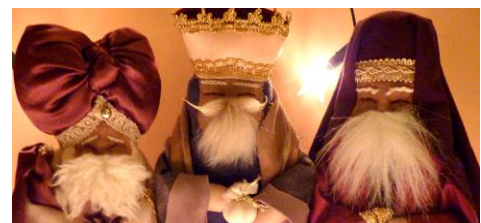
Joy



Meekness - love



Peace – patience



Gentleness – faithfulness – goodness

**WE HOPE YOU HAVE FUN WITH YOUR SET©
MAY GOD'S GRACE BE WITH YOU**